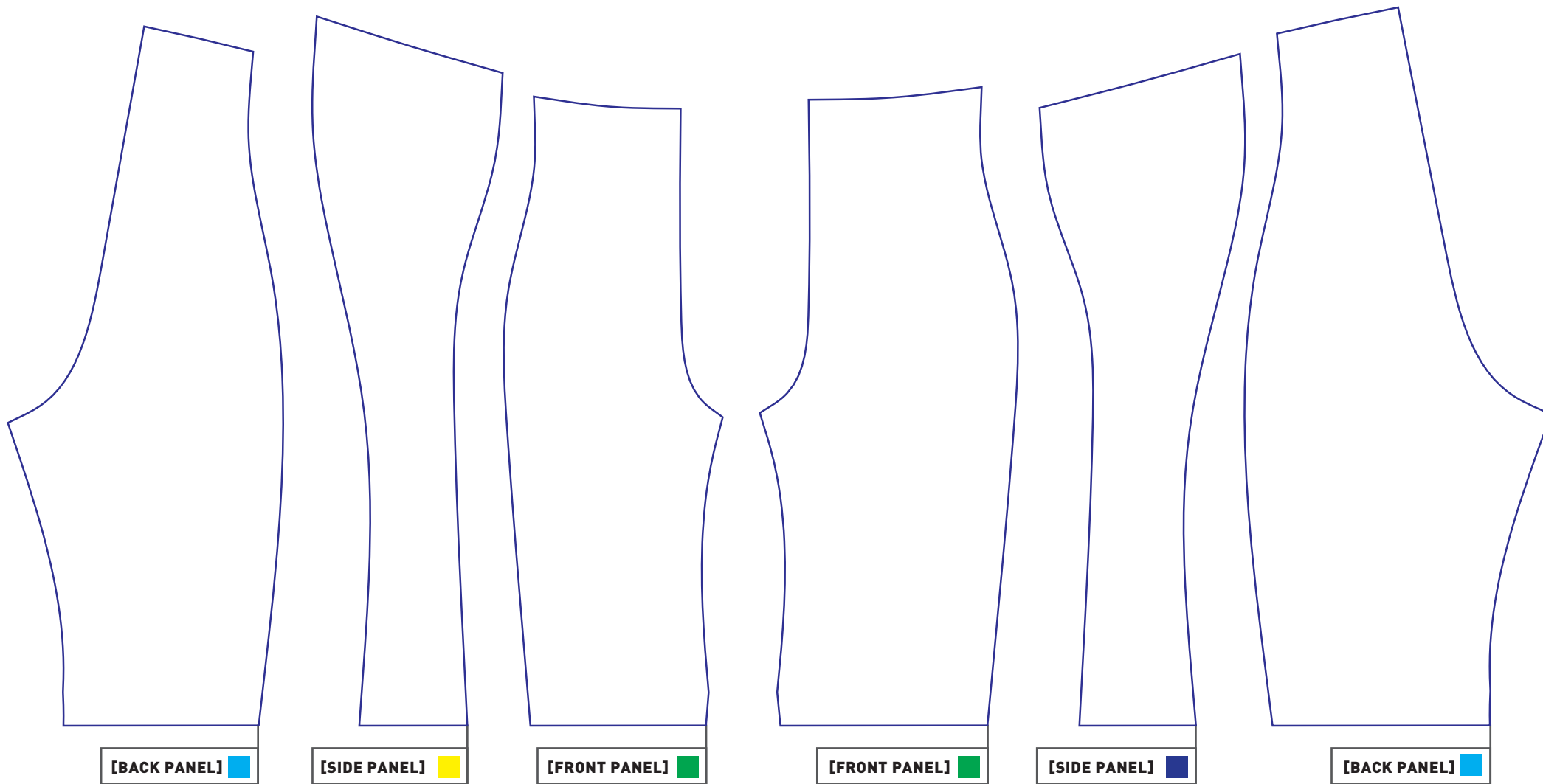
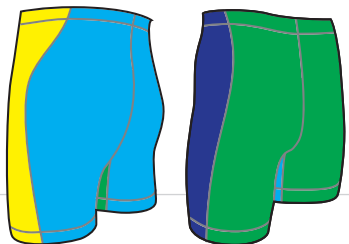


**[CATEGORY]** TRIATHLON  
**[RANGE]** CUSTOM  
**[GARMENT TYPE]** TRI PANT  
**[SEX]** MEN  
**[CODE]** YVMD  
**[FABRIC/1] [MAIN]** HYDRO-MAX 290GSM 80% POLYESTER 20% SPANDEX TRICOT  
**[SIZES]** XS-XXXL  
**[COLOURS]** SUBLIMATED

**[KEY FEATURES]**

- 01. Tri-pad chamois: 6mm thickness | shock absorbence | comfort
- 02. Twin needle elastic leg opening: comfort | secure grip
- 03. Rubber technical waistband with internal draw cord: secure | comfort
- 04. Flat lock top stitch: comfort | details
- 05. 21cm inseam
- 06. Silicone label: comfort | low irritation

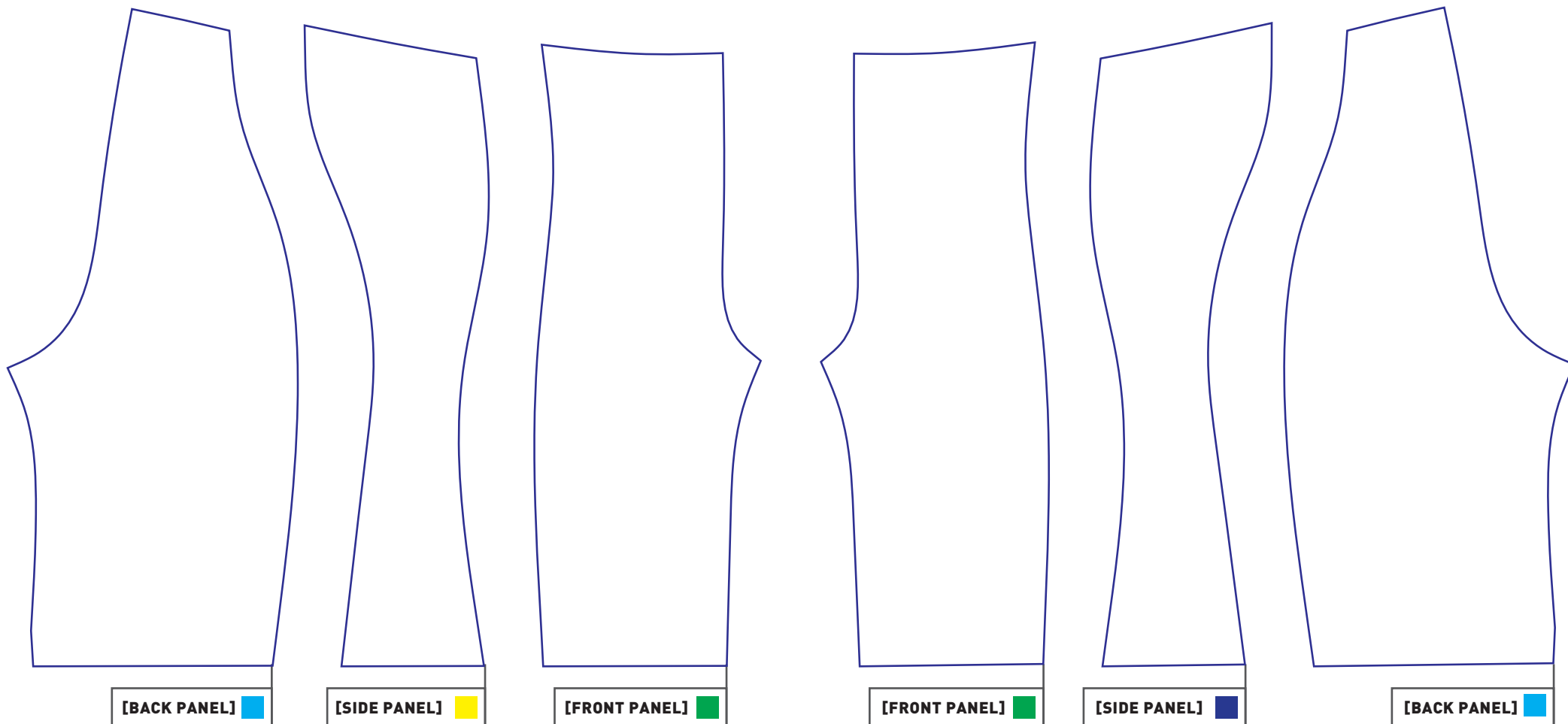


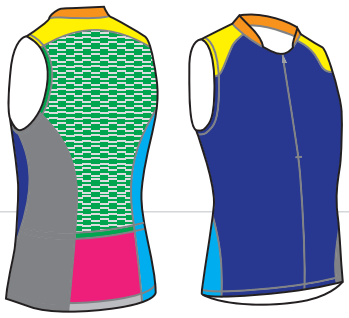


**[CATEGORY]** TRIATHLON  
**[RANGE]** CUSTOM  
**[GARMENT TYPE]** TRI PANT  
**[SEX]** WOMEN  
**[CODE]** YVMG  
**[FABRIC/1] [MAIN]** HYDRO-MAX 290GSM 80% POLYESTER 20% SPANDEX TRICOT  
**[SIZES]** 8-16  
**[COLOURS]** SUBLIMATED

**[KEY FEATURES]**

- 01. Tri-pad chamois: 6mm thickness | shock absorbence | comfort
- 02. Twin needle elastic leg opening: comfort | secure
- 03. Rubber technical waistband with internal draw cord: secure | comfort
- 04. 18.5cm inseam
- 05. Flat lock top stitch: comfort | performance
- 06. Silicone label: comfort | low irritation

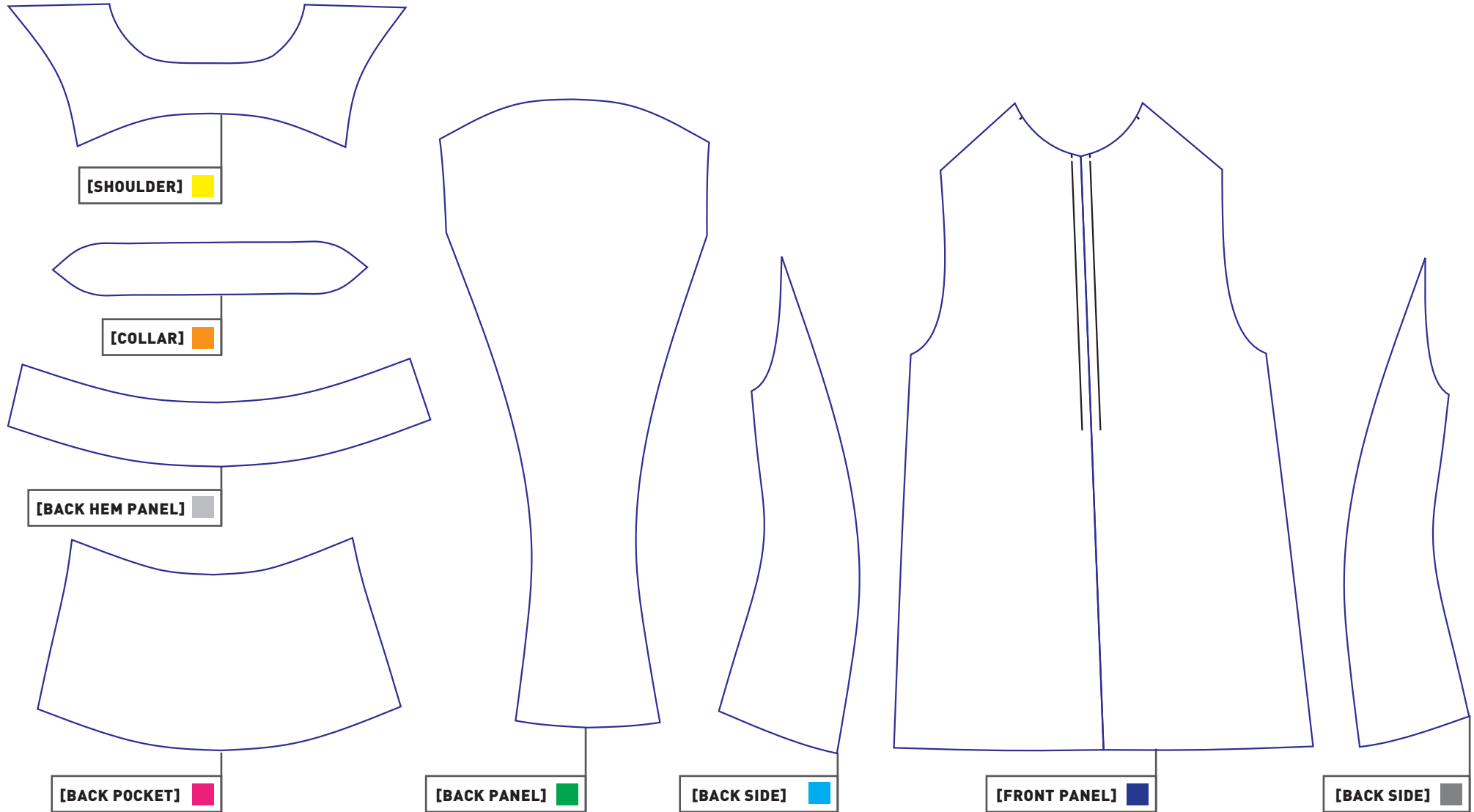


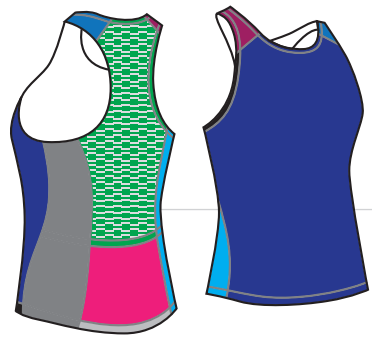


**[CATEGORY]** TRIATHLON  
**[RANGE]** CUSTOM  
**[GARMENT TYPE]** TRI TANK  
**[SEX]** MEN  
**[CODE]** YVMB  
**[FABRIC/1] [MAIN]** HYDRO-MAX 290GSM 80% POLYESTER 20% SPANDEX TRICOT  
**[FABRIC/2] [BACK PANEL]** HYDRO-MESH 250GSM 90% POLYESTER 10% SPANDEX  
**[SIZES]** XS-XXXL  
**[COLOURS]** SUBLIMATED

**[KEY FEATURES]**

01. Concealed zip down centre front: comfort | breathability
02. Three rear pockets: secure storage
03. Elasticated hem: comfort | secure grip
04. Flat lock top stitch: comfort | stretch
05. Twin needle armhole: comfort
06. Silicone back neck label: comfort | low irritation
07. Mesh back panel: comfort | breathability

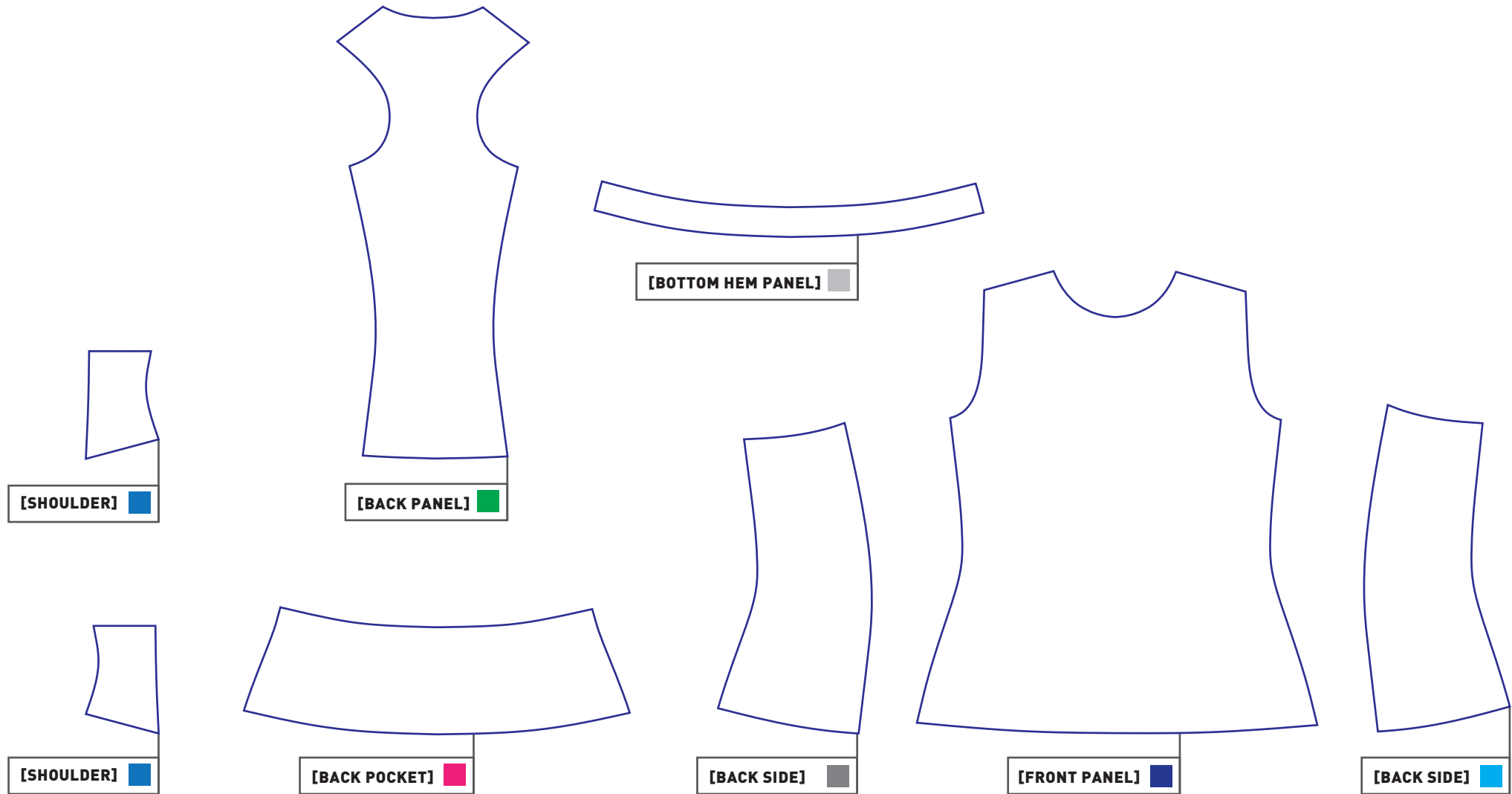


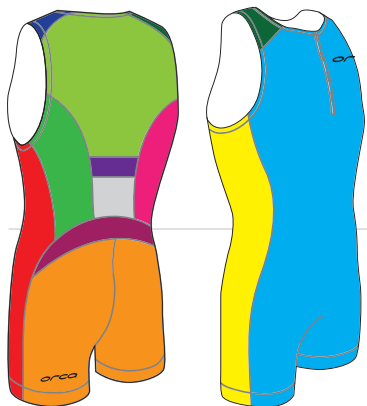


**[CATEGORY]** TRIATHLON  
**[RANGE]** CUSTOM  
**[GARMENT TYPE]** TRI SINGLET  
**[SEX]** WOMEN  
**[CODE]** YVMF  
**[FABRIC/1] [MAIN]** HYDRO-MAX 290GSM 80% POLYESTER 20% SPANDEX TRICOT  
**[FABRIC/2] [BACK PANEL]** HYDRO-MESH 250GSM 90% POLYESTER 10% SPANDEX  
**[SIZES]** 8-16  
**[COLOURS]** SUBLIMATED

**[KEY FEATURES]**  
 01. Internal body-contoured bra: support | comfort  
 02. Three rear pockets: secure storage  
 03. Elastic hem band: comfort | secure  
 04. Flat lock top stitch: comfort | performance  
 05. Twin needle armhole: comfort  
 06. Silicone back neck label: comfort | low irritation

**orca**

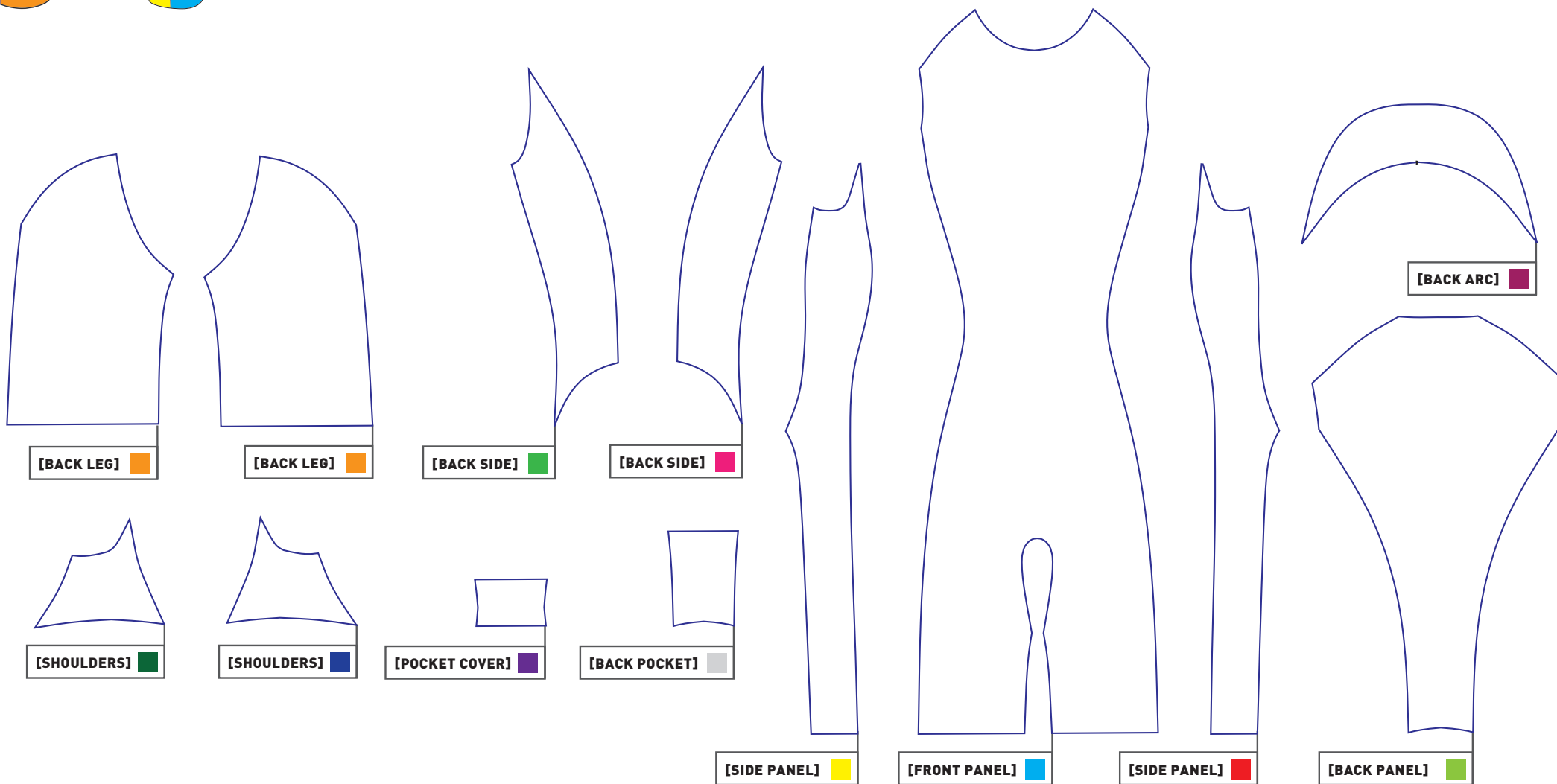


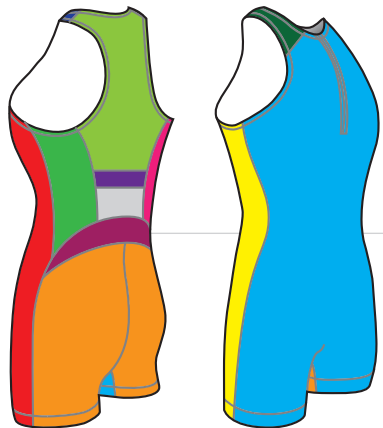


**[CATEGORY]** TRIATHLON  
**[RANGE]** CUSTOM  
**[GARMENT TYPE]** RACE SUIT  
**[SEX]** MEN  
**[CODE]** YVMA  
**[FABRIC/1] [MAIN]** HYDRO-MAX 290GSM 80% POLYESTER 20% SPANDEX TRICOT  
**[FABRIC/2] [BACK PANEL]** HYDRO-MESH 250GSM 90% POLYESTER 10% SPANDEX  
**[SIZES]** XS-XXXL  
**[COLOURS]** SUBLIMATED

**[KEY FEATURES]**

01. Tri-pad chamois: 6mm thickness | shock absorbence | comfort
02. One covered rear pocket: secure storage
03. 3-coil lockable zip down centre front: comfort | breathability
04. 20.5cm inseam
05. Flat lock top stitch: comfort | stretch
06. Twin needle elastic leg opening: comfort | secure grip
07. Twin needle armhole and neck opening: comfort
08. Silicone back neck label: comfort | low irritation
09. Mesh back panel: comfort | breathability





**[CATEGORY]** TRIATHLON  
**[RANGE]** CUSTOM  
**[GARMENT TYPE]** RACE SUIT  
**[SEX]** WOMEN  
**[CODE]** YVME  
**[FABRIC/1] [MAIN]** HYDRO-MAX 290GSM 80% POLYESTER 20% SPANDEX TRICOT  
**[FABRIC/2] [BACK PANEL]** HYDRO-MESH 250GSM 90% POLYESTER 10% SPANDEX  
**[SIZES]** 8-16  
**[COLOURS]** SUBLIMATED

**[KEY FEATURES]**

01. Tri-pad chamois: 6mm thickness | shock absorbence | comfort
02. 3-coil lockable zip down centre front: comfort | breathability
03. Rear safety pocket: secure storage
04. Internal mesh body-contoured bra: support | comfort
05. Flat lock top stitch: comfort | performance
06. Twin needle elastic leg opening: comfort | secure
07. Twin needle armhole and neck opening: comfort
08. 22.5cm inseam
09. Silicone back neck label: comfort | low irritation

